

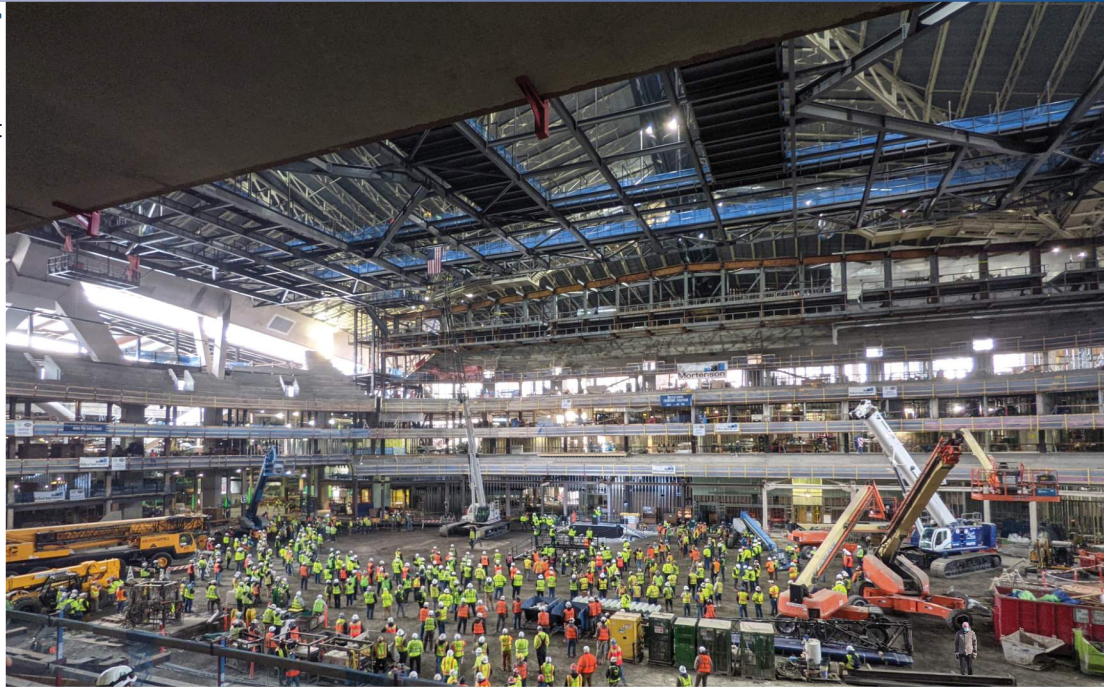
# PROJECT NEWSLETTER



## EVERETT "FITZ" FITZHUGH COULDN'T HAVE SAID IT BETTER...

"What goes through my mind is that the light at the end of the tunnel is getting nearer and nearer and nearer. With all the uncertainty in our world, it's good to have something that you can point to and say that's going to happen, that's on schedule, that's going to change things, that's going to bring us together." Robert Nellams, Director of Seattle Center at topping out ceremony, where the final steel beam was secured in place at Climate Pledge Arena on [January 29th, 2021](#).

"No problem, and thank you. She deserves the recognition, she kills it out there everyday. I would not be able to do what I do without her." - TJ, Mortenson Foremen on discussing Leilanna Barrientes, this month's team member spotlight



## TEAM MEMBER SPOTLIGHT



My name is **Leilanna Barrientes** and I am an operator with Local 302. My main duties are to run the forklift, but I also help out with the hoist when needed. I assist all the trades on the site with their needs, from unloading or loading trucks to moving all type of materials.

I started with Mortenson in June 2020 and was in training for few years previous to that and on other construction projects. Before I was an operator, I used to run a tax office, and while preparing for a new season, I spoke to an ex-employee who had started a construction job. I was amazed at how she described it, so I joined the next program session and here I am.

Working on a project like this is one of the most rewarding things I've ever done. It's going to be here forever and I'm helping to build it, I'm helping to build my city.

The history of Key Arena means a lot to me, I was born and raised in Seattle. My first concert there was Destiny's Child and my grandma would take me to the Supersonic games.

I'm not saying this just because I work here, but Mortenson is the best. You get treated fairly and people are constantly willing to help. My skill level has gone up 10 or 15 notches. I've gotten so much better in such a short amount of time because of the confidence and leadership I have gained here.

In construction, you can start as a laborer, then you can go to a project manager, or you can run your own construction company. Your career, where you start and where you end, the possibilities are endless. The beautiful thing about construction is you get out of it, what you put into it.



# GROUNDBREAKING WORK WITH THE TUNNEL CREW

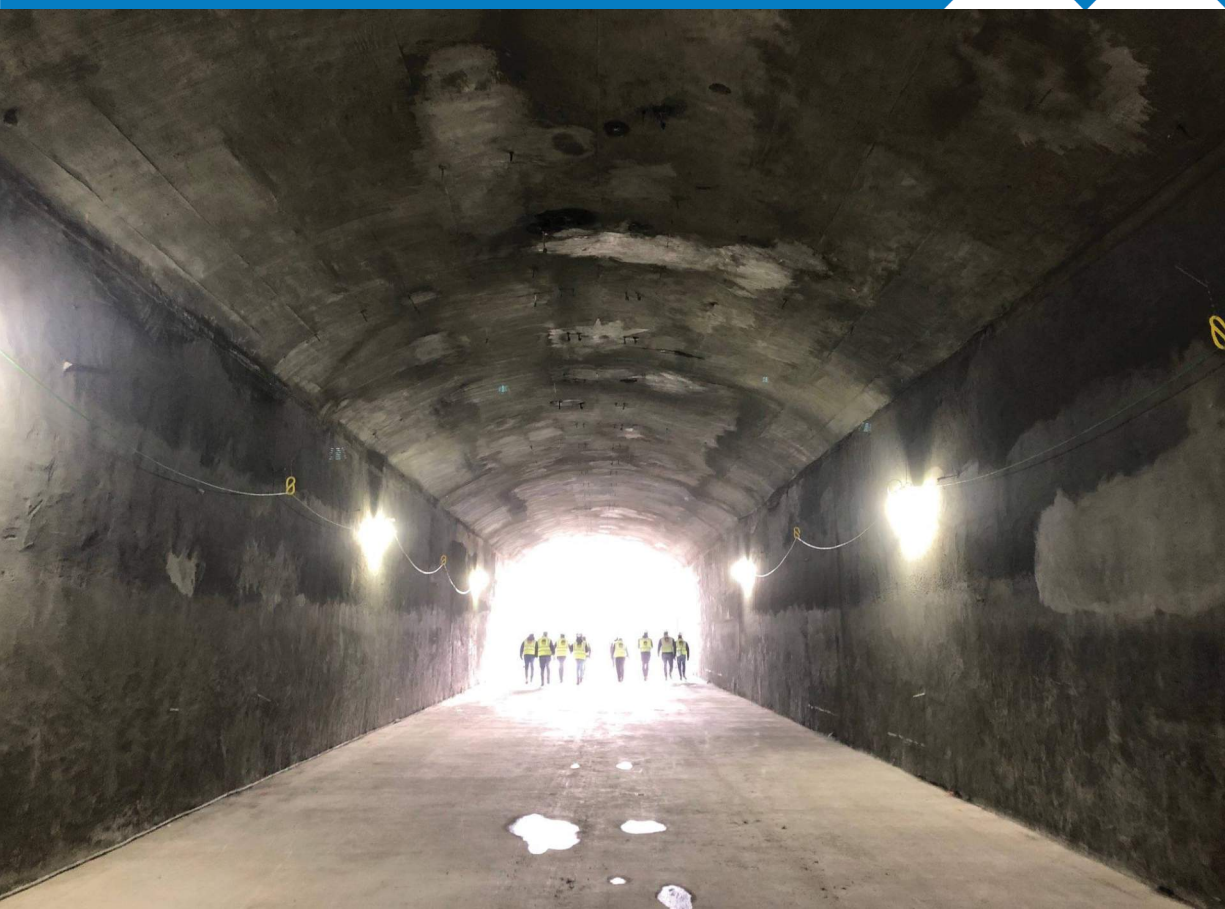
POWERPLAY!

The Climate Pledge Arena Tunnel, spanning 180' long by 25' wide, and 20' tall, is nothing less than an extraordinary feat for our team. There were three huge milestones during construction of the tunnel. The first was the completion of the (30) 24" pipe canopy, which created the framework of the tunnel, and helped to prevent settlement of the historic Bressi Building.

Next, the completion of SEM (Sequential Excavation Method) tunneling. During excavation, we removed approximately 6,000 cubic yards of excavated material, installed 44 steel sets underneath the pipe canopy, and shot over 600 cubic yards of shotcrete, to create the temporary condition of the tunnel.

Finally, the most exciting milestone, was the completion of the 30" concrete slab on grade, walls, and crown. The final thickness of the tunnel required approximately 290 tons (580,000lbs) of rebar and over 5000 cubic yards of concrete, to create the condition you see today.

Successfully hitting these 3 milestones no significant injuries is incredible and nothing short of phenomenal. Down the road, people may only see a grey structure and forget about all the challenges that were overcome to create of the tunnel, but in this moment, we can take the time to celebrate and recognize our success.

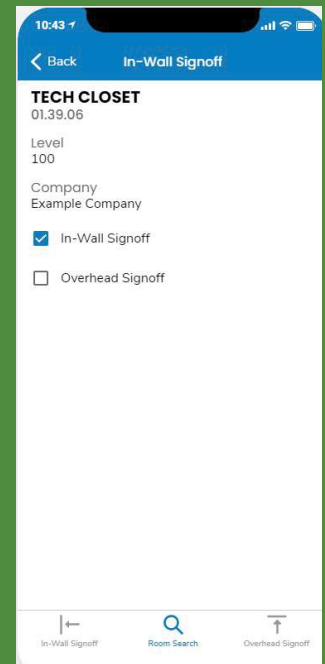
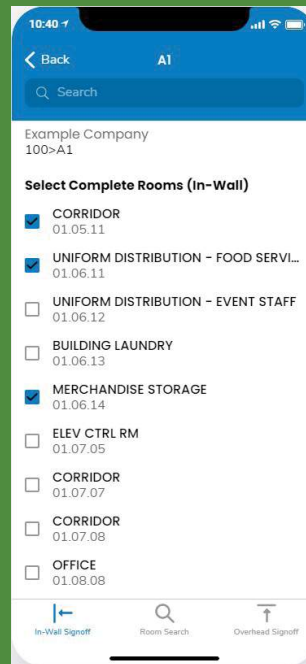


# WE HAVE AN APP FOR THAT

In an age of bigger projects with tighter schedules, constant improvement and change are necessary but don't always come easy when updating traditional work methods. We understand the need to better collect all the data floating around on a project site, but more importantly we need to do this in a way that is more efficient than current processes. If we introduce a solution that adds a step to a current workflow, we've already failed. Here at CPA the ICC team has developed a handful of apps to help collect and aggregate data in a way that allows us to make closer to real-time decisions and analysis. Of those, the most widely used and successful is our Sign-Off Tracking app. Learning from mistakes made with technology introduced earlier in the project, we have kept the app as lean as possible by doing things such as removing the need to download anything to your phone. New users can get up and running in a matter of minutes.

There's a steady stream of startups that are developing solutions to every imaginable corner of the construction industry, but sometimes the best solutions are ideated in-house. Case in point, we believe by continuing to work in this way, we can offer a company-wide solution with our Sign-Off Tracking app. By developing our next-gen of technology alongside our people in the field we're positioned to embrace change in the most efficient way possible.

The Sign-Off App allows a trade partner to easily select rooms their work is complete in. By collecting this information in a digital way, we can see the status of each room in real time to understand when we are able to proceed with our inspections and close a room. The dashboard is also tied to a schedule, so we can track against our planned dates and see where our efforts need to be focused.



CPA In-Wall Signoff Tracking

Room	Status
03.ME.D	Complete
MECH. SHAFT - AREA D	Incomplete
Valley Electric	Late
Stafford Smith	Late
Shinn Mechanical	Complete
PCI (Walls)	Late
Mortenson Carpenters	Late
ISEC	Complete
IDX	Late
Hermanson/PCI (Insulation)	Late
Hermanson - Sheet Metal	Complete
Hermanson - Plumbers	Complete
Hermanson - Mechanical Piping	Complete
Hermanson - Controls	Complete
Firstline Systems	Late
Cochran	Late
Astound	Complete
03.ME.C	Incomplete
MECH. SHAFT - AREA C	Incomplete
Valley Electric	Late
Stafford Smith	Late



# THE CULTURE OF QUALITY

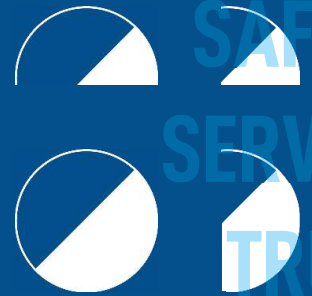
Our team reached a major milestone in the delivery of a successful project with the completion of our first in place mockup. On 1/21 the Mortenson, Populous, and CAA ICON team punched the Main Concourse Men's and Women's Restroom in Quad D, being the first finished space completed within the building. This is one of four composite mockups that will be built in place ahead of schedule within the project. The Tunnel Club B1, Main Concourse Food and Beverage, and Sideline Suite S106 are all slated to be completed and punched in Mid-February.

These mockups play a major role in the success of the Mortenson Quality Program. The yellow cardstock within the photos represents a lesson learned during the buildout of the mockup. Whether that be construction sequencing, rough opening locations, ADA tolerances, design details, or process the list could go on and on. By pulling these areas up in the schedule and finishing early we can learn and implement changes downstream to ensure our first-time quality.

Building out these mockups is no small feat and a combined effort from the Superintendents, Engineers, Trade Partners, and Design Team. Submittals are broken out and pushed through earlier to begin procurement, construction sequencing is adjusted within areas, and the occasional engineering judgment is required to build a wall before slabs being placed. However, the lessons learned greatly outweigh the pain and the trades downstream will be great full for the time spent upfront.

Be on the lookout for the completion of the next three mockups come February!

STEWARDSHIP  
SAFETY  
SERVICE  
TRUST  
TEAMWORK  
RESPONSIBILITY



# SAFETY: 2021

From April 2020 through now, we have worked approximately 1,228,800 hours and have needed to adapt to protect the health and safety of our force.

Everyone has been working diligently to advance the project forward while prioritizing eliminating the spread of COVID-19. The ingenuity of our team members during this time has allowed us to be able to perform our work safely, protecting our team member and their families. While efforts at work are noteworthy, over the holiday season, we learned that the actions of our team members outside of work can have a big effect on the project as well.

Efforts that will help us to continue being successful with our COVID-19 response:

- 100% mask use by all team members
- Physical distancing of 6' between team members
- Proper hand hygiene.
- Daily health screenings for all team members.
- Prioritization of staying home when feeling sick.
- Thorough contact tracing protocols.
- Advanced daily disinfection protocols.



Handwashing Station, located throughout the site





# WHERE IN THE WORLD???

## Retractable Seating

- Location: Slovakia
- Quantities/status – 2 units have started fabrication this month, the units which are on the East and West-most side of the bowl.
- Interesting Fact – the retractable East unit will be right behind the home and visitor bench and the retractable West will be right behind the penalty box!

## Fixed seating

- Location - Malaysia
- Quantities/status – 7100 of the forte high back seats have started to be manufactured this month and targeting completion in late February. The Activas will start manufacturing in Australia at the beginning of February.
- Interesting Fact –to make all of the fixed seating possible, work takes place in 5 different countries

## SWEET, SUITE MILLWORK MADE IN PORTLAND



## EXHAUST HOODS RANGING IN WEIGHT FROM 500LBS TO 1000LBS



**CHECK OUT THE KRAKEN-GRAM**  
[@CLIMATEPLEDGEARENA](#)  
[@SEATTLEKRAKEN](#)



## CONTACT

Greg Huber  
Construction Executive  
763.287.5909  
[greg.huber@mortenson.com](mailto:greg.huber@mortenson.com)